

R3D Data Manager Quick Start Guide

Using the R3D Data Manager

Getting started with the R3D Data Manager involved these simple steps:

Select The Source



Set your source R3D files here. Click on the box "Add to Queue". A new dialog window will popup. Navigate to the folder containing your RDM folder (RED camera build 15 or higher) or RDC folders (RED camera build 14 and lower). You should see the "digial.*.profile" files listed, that's the directory you want. If this is your first time loading these R3D files, a checksum process should start automatically. You can add up to 200 sources to process at once.

Set The Project Information



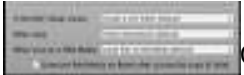
The options here will only be enabled if the source is identified as a Red Media. Click on the "Edit Project Info" button to edit the items. You do not need to fill them out at all if you don't want to. Items are saved between sessions automatically.

Set The Destination Directories



Set your destination directories. Click on the "Add a Directory" button and navigate to where you want the R3D files to be copied. You should **NOT** create a new directory for each RED Media you download.

Set The Destination Options



Check your destination options to ensure they are set correctly. Usually you will want to have the options set as shown here. The "Erase from RED Media" only takes effect if you are copying from a RED Media, and has no effect if you are copying from a different filesystem (NON-RED Media).

Start Copying

Click on the "Start Copy" button in the upper right. A spinning icon will appear, meaning that the copy process is queued. The copy process will only start immediately after all R3D files have an initial checksum.

That's all it takes to securely copy your media.